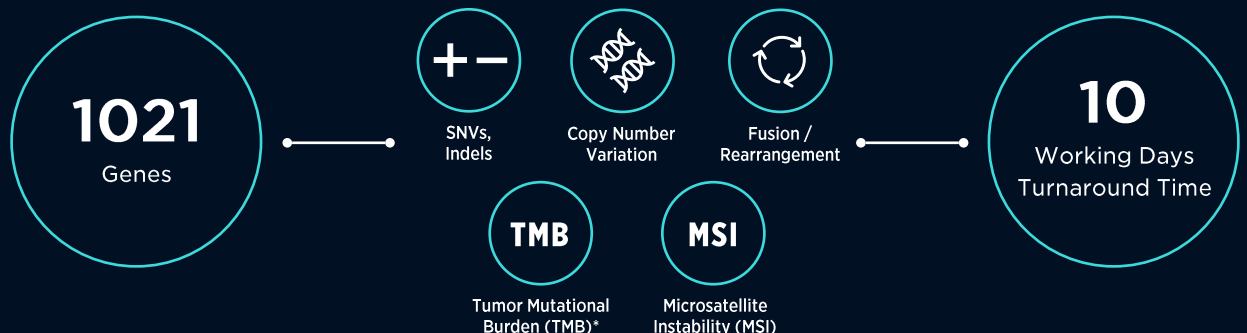




COMPASS Comprehensive Assay

A 1021 genes, targeted Next-Generation Sequencing (NGS) panel, designed to deliver personalized treatment decisions for multiple solid tumor types

Multiple Variant Types



*Clinical Validation ongoing

1021
GENES

1,000x
DEPTH

312
GENES WITH FULL CDS

38
FUSION GENES

1.04M
TMB REGION

216
MSI LOCI

Comprehensive

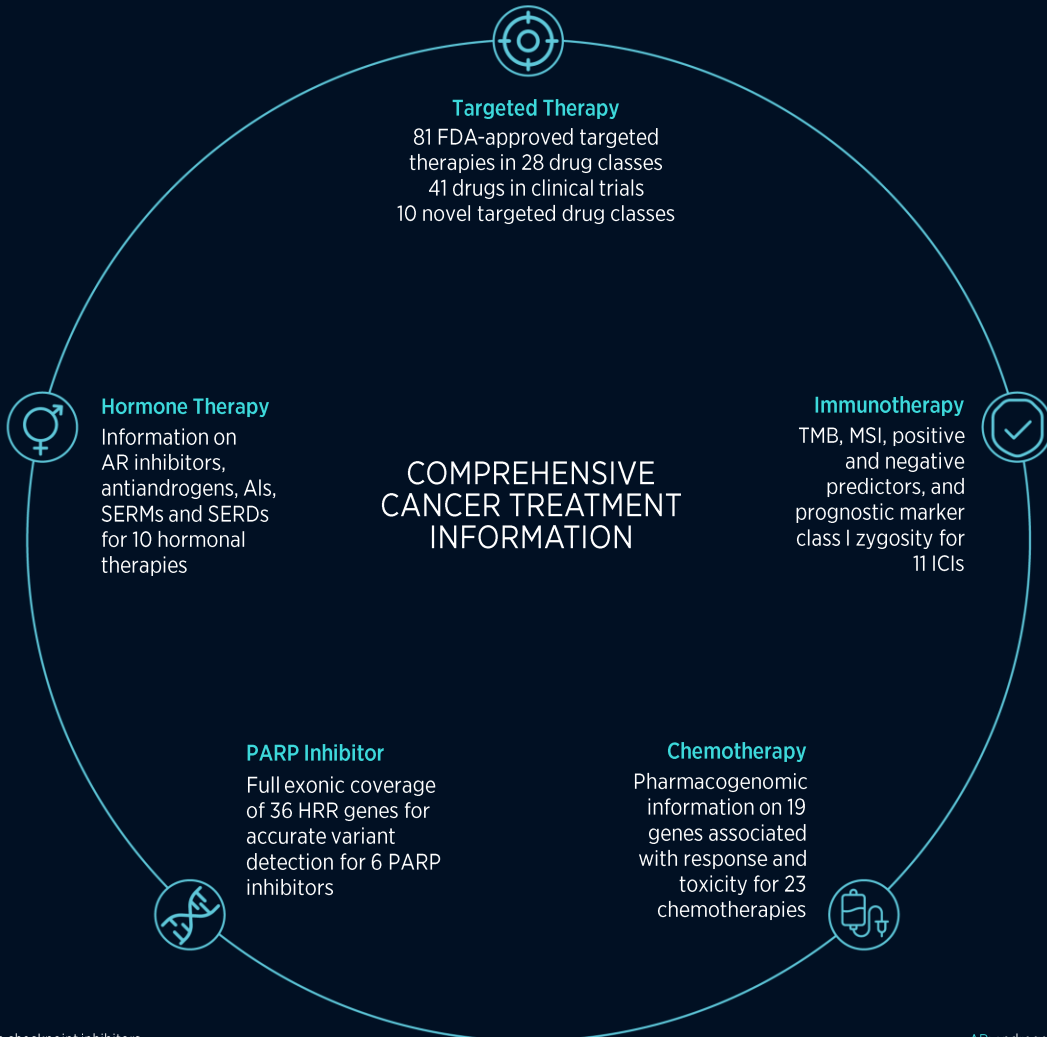
NGS of 1021 genes in a single test for treatment selection

Actionable

Validated for clinically actionable genes for multiple cancer types

Fast

Fast turnaround time for quick treatment decision



ICI: Immune checkpoint inhibitors
 HRR: Homologous recombination repair
 PARP: Poly-adenosine diphosphate-ribose polymerase
 CDS: Full coding DNA sequence

AR: androgen receptor
 AI: aromatase inhibitors
 SERMs: selective estrogen receptor modulators
 SERDs: selective estrogen receptor degraders
 HLA: human leukocyte antigen